

PIC Microcontroller/PIC16F877 Board

Code: ASM/PIC40P

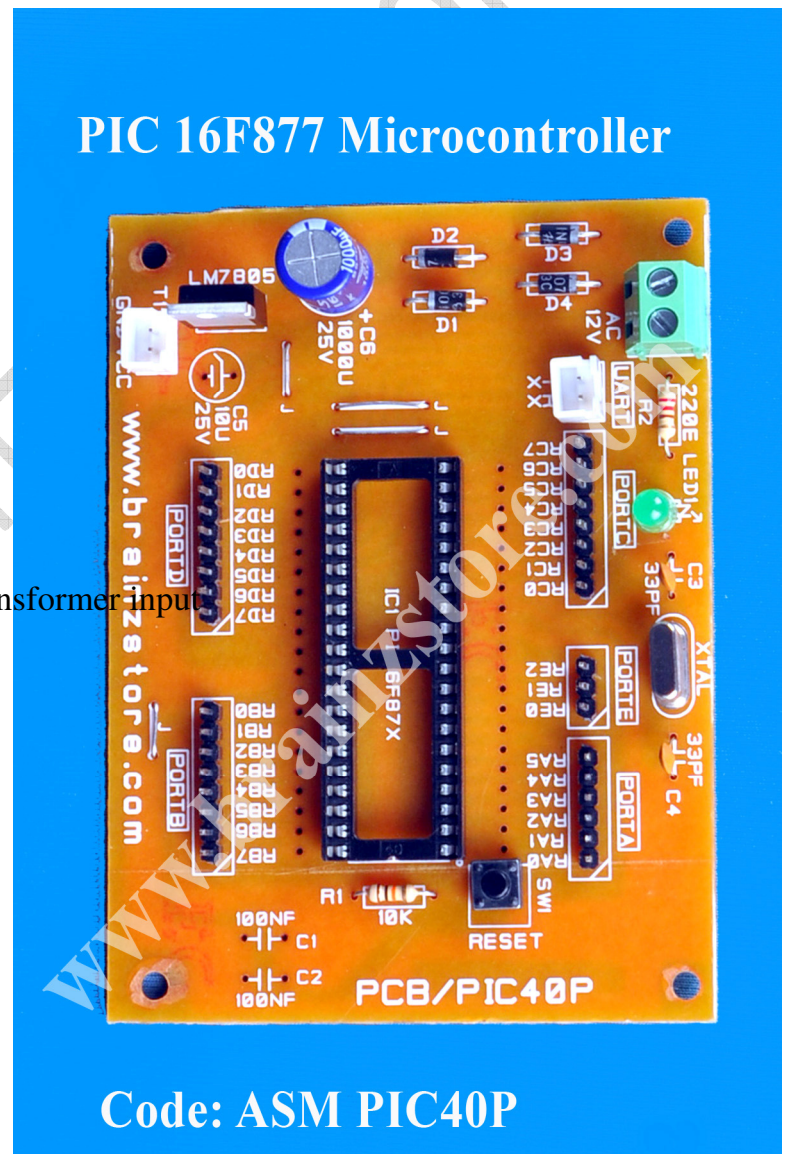
The PIC40P Experimenter's Board PCB is a complete prototyping platform for the PIC16F877, PIC16F877A PIC family of 40-pin microcontrollers. It includes suitable Connectors I/O ports where you can connect External Add-ons via these ports.

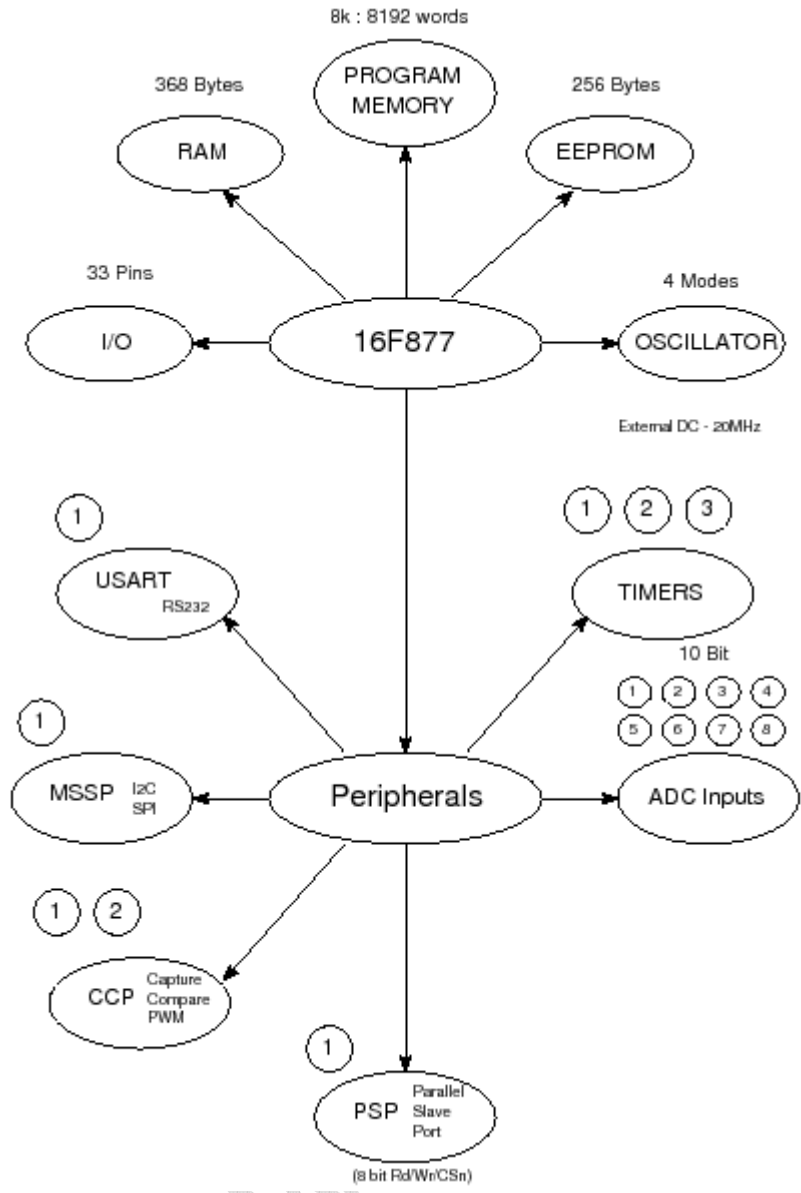
This Assembled PCB includes

- External Step Down Transformer
- Bridge Rectifier
- Regulator 7805
- Reset
- Bug strip for I/O ports
- Power LED indication
- 20MHZ Xtal
- Single Layer PCB with legend
- 5082/V2 Standard connector for Transformer Input

Dimension:

10 * 8 cm





Components:

Diode:	D1-D4	-----	IN4001/7
Resistor:	R1	-----	220E
	R3	-----	10K
Capacitor:			
	C1	-----	1000MFD/25V
	C2	-----	1MFD/15V (optional)

	C3	-----	10MFD/63V
	C4&C5	-----	33pf
Xtal:	Y1	-----	20 Mhz
Regulator:	Reg1	-----	7805
Reset:	SW1	-----	2 pin Reset switch
LED		-----	5mm LED
Output:	Ports	-----	Bug stick

Caution: 12V AC input should be given only via step down transformer